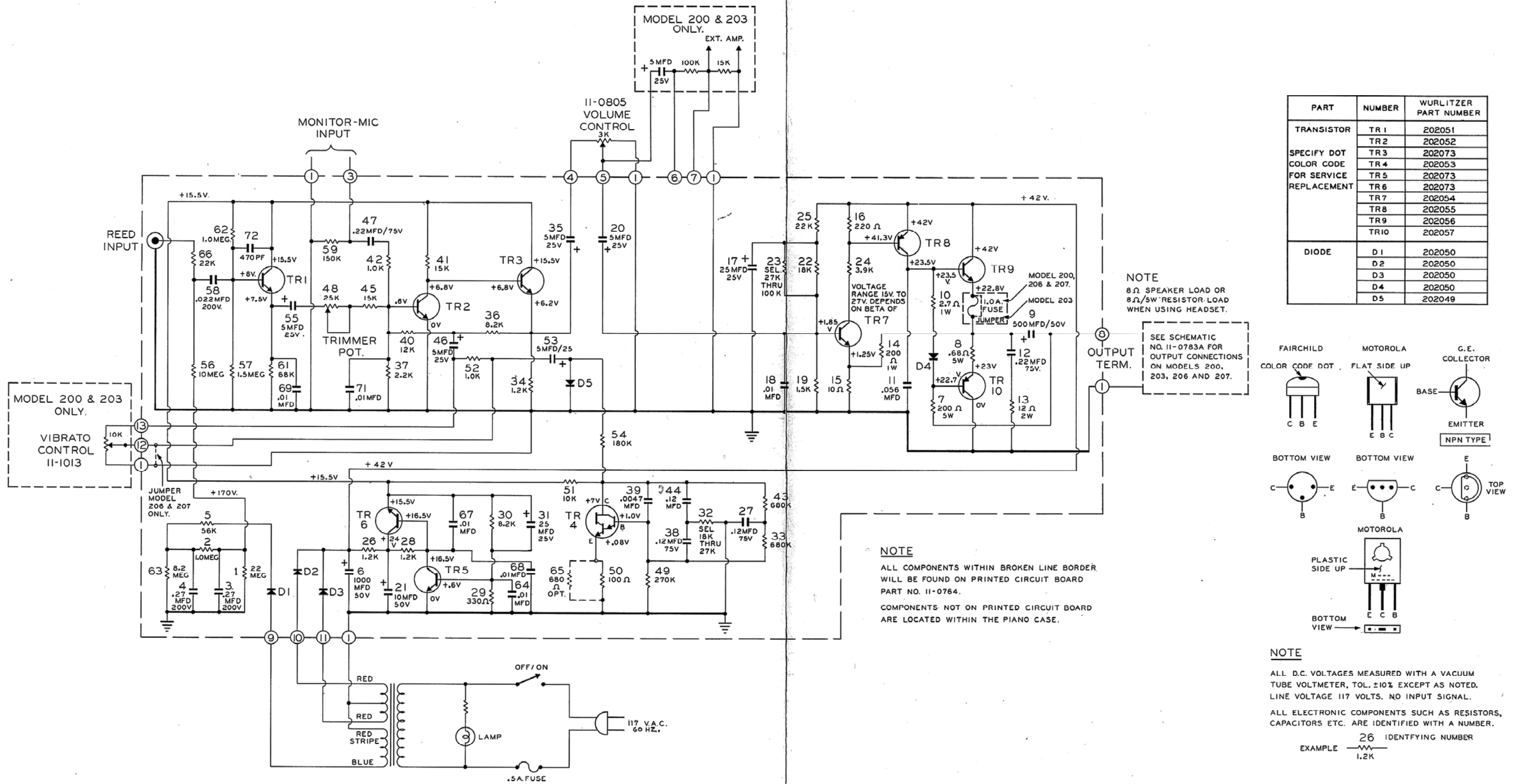
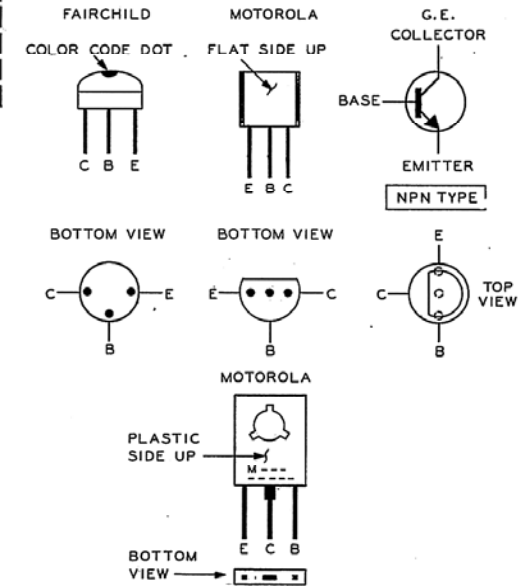


# SCHEMATIC - ELECTRONIC PIANO AMPLIFIER

## MODELS 200-203-206 & 207



PART	NUMBER	WURLITZER PART NUMBER
TRANSISTOR SPECIFY DOT COLOR CODE FOR SERVICE REPLACEMENT	TR 1	202051
	TR 2	202052
	TR 3	202073
	TR 4	202053
	TR 5	202073
	TR 6	202073
	TR 7	202054
	TR 8	202055
	TR 9	202056
	TR 10	202057
DIODE	D 1	202050
	D 2	202050
	D 3	202050
	D 4	202050
	D 5	202049



[CLICK HERE](#) to buy Wurlitzer transistors from **BustedGear**

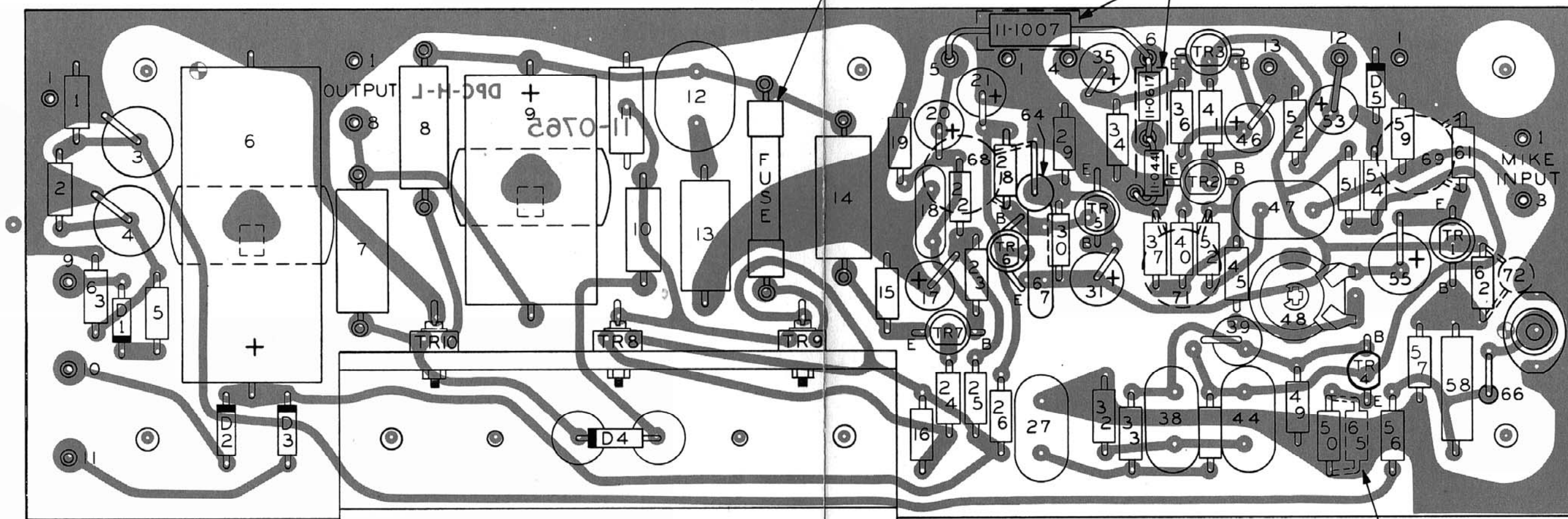
THE WURLITZER COMPANY - DEKALB DIVISION - DEKALB, ILLINOIS.  
MODEL - 200 - 203 - 206 - 207.  
TITLE - SCHEMATIC - AMPLIFIER  
STARTING SERIAL NO. 200-48001 206-48601 207-49151  
PART NO. II-0783-S-2-E-10  
DATE - SEPT. 1, 1969.

# ELECTRONIC PIANO AMPLIFIER P.C. BOARD

## MODELS 200-203-206 AND 207

1A.- MODELS 200 206 & 207.  
 JUMPER WIRE - MODEL 203  
 ONLY.

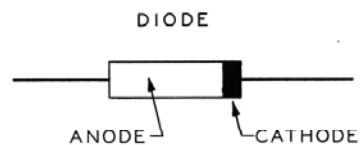
COMPONENTS 11-1007, 11-0617 & 11-0441  
 WITHIN DOTTED OUTLINES ARE USED  
 ON MODELS 200 AND 203 ONLY.



OPTIONAL

**NOTE**

SEE SCHEMATIC PART NO. 11-0783 FOR CONNECTIONS AND COMPLETE CIRCUIT.  
 NUMBERS ON COMPONENTS CORRESPOND TO NUMBERS ON SCHEMATIC 11-0783.

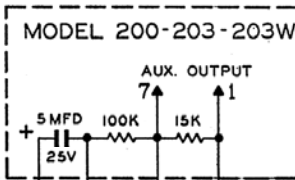
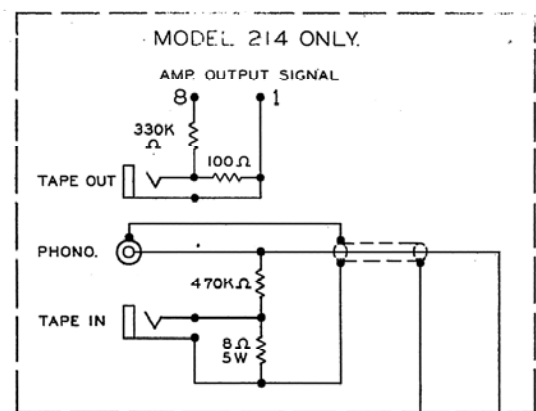


THE WURLITZER COMPANY-DEKALB DIVISION, DEKALB, ILL.

MODEL - 200-203-206-207  
 TITLE - P.C. BOARD-AMPLIFIER  
 STARTING SERIAL NO. 200-48001, 206-48601, 203-48451, 207-49151. PART NO. 11-0764-S 2E-9  
 DATE - SEPT. 1, 1969.

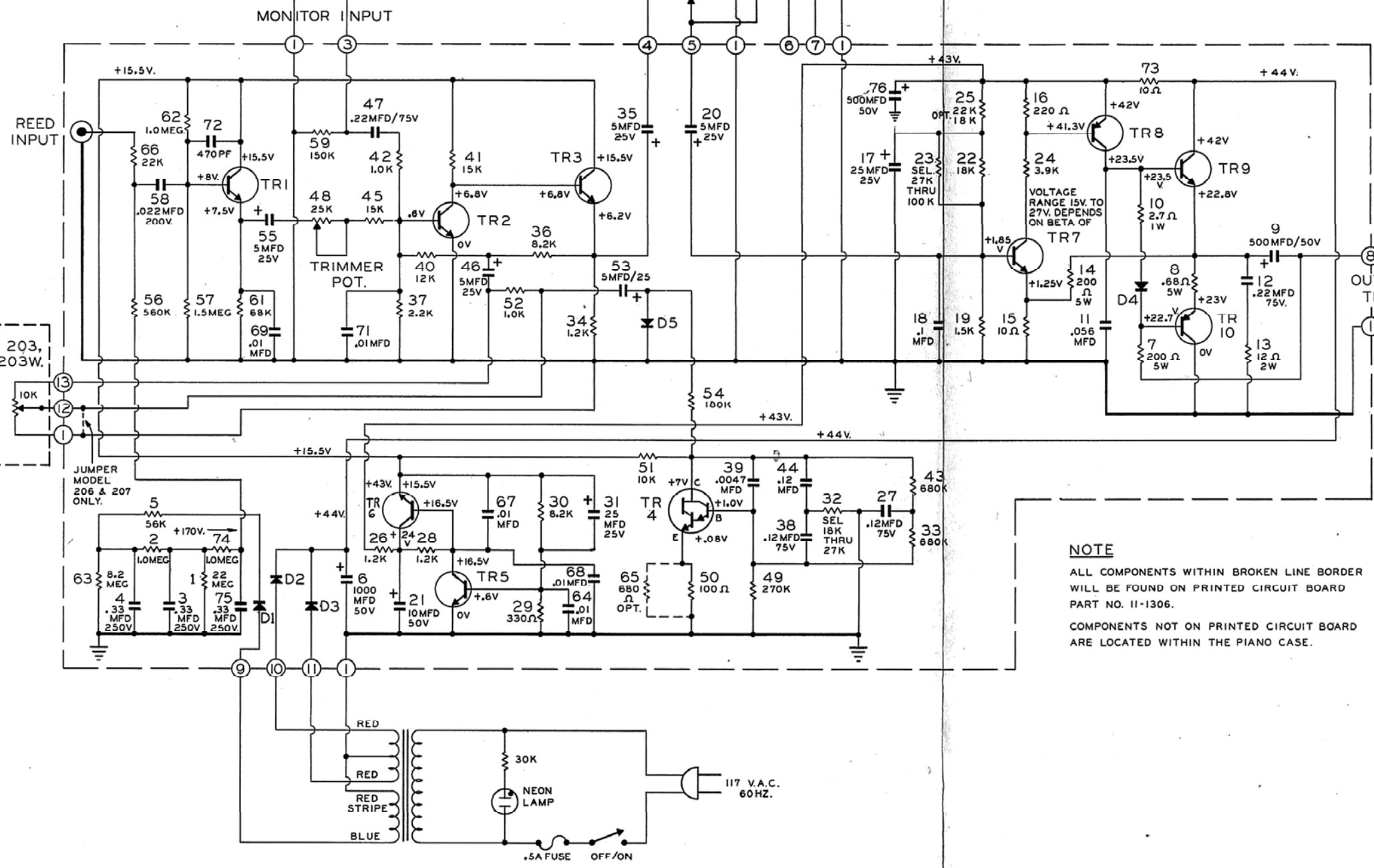
# SCHEMATIC - ELECTRONIC PIANO AMPLIFIER

## MODELS 200-203-203W-207-214



SEE SCHEMATIC NO. II-1305A-S-1 FOR CONNECTIONS TO 1-7.

PART	NUMBER	WURLITZER PART NUMBER
TRANSISTOR	TR 1	II-0778
	TR 2	II-0778
	TR 3	II-0778
	TR 4	II-0775
	TR 5	II-0778
	TR 6	II-0778
	TR 7	II-0774
	TR 8	II-0770
	TR 9	II-0772
	TR 10	II-0773
DIODE	D 1	II-0769
	D 2	II-0771
	D 3	II-0771
	D 4	II-0771
	D 5	II-0781



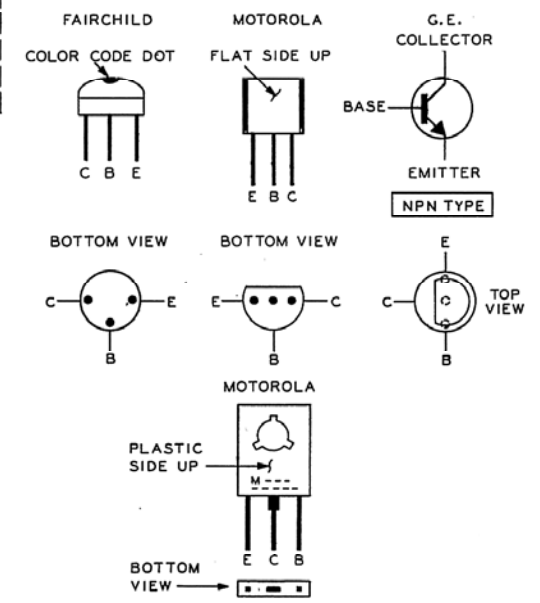
**NOTE**

4Ω TO 8Ω SPEAKER LOAD OR  
8Ω/5W RESISTOR LOAD WHEN USING HEADSET.

SEE SCHEMATIC NO. II-0783A FOR OUTPUT CONNECTIONS ON MODELS 200, 203W, 203, 206, 207 AND 214.

**NOTE**

ALL COMPONENTS WITHIN BROKEN LINE BORDER WILL BE FOUND ON PRINTED CIRCUIT BOARD PART NO. II-1306.  
COMPONENTS NOT ON PRINTED CIRCUIT BOARD ARE LOCATED WITHIN THE PIANO CASE.



**NOTE**

ALL D.C. VOLTAGES MEASURED WITH A VACUUM TUBE VOLTMETER, TOL. ±10% EXCEPT AS NOTED. LINE VOLTAGE 117 VOLTS. NO INPUT SIGNAL.  
ALL ELECTRONIC COMPONENTS SUCH AS RESISTORS, CAPACITORS ETC. ARE IDENTIFIED WITH A NUMBER.  
26 IDENTIFYING NUMBER  
EXAMPLE 1.2K

**THE WURLITZER COMPANY - DEKALB DIVISION - DEKALB, ILLINOIS.**

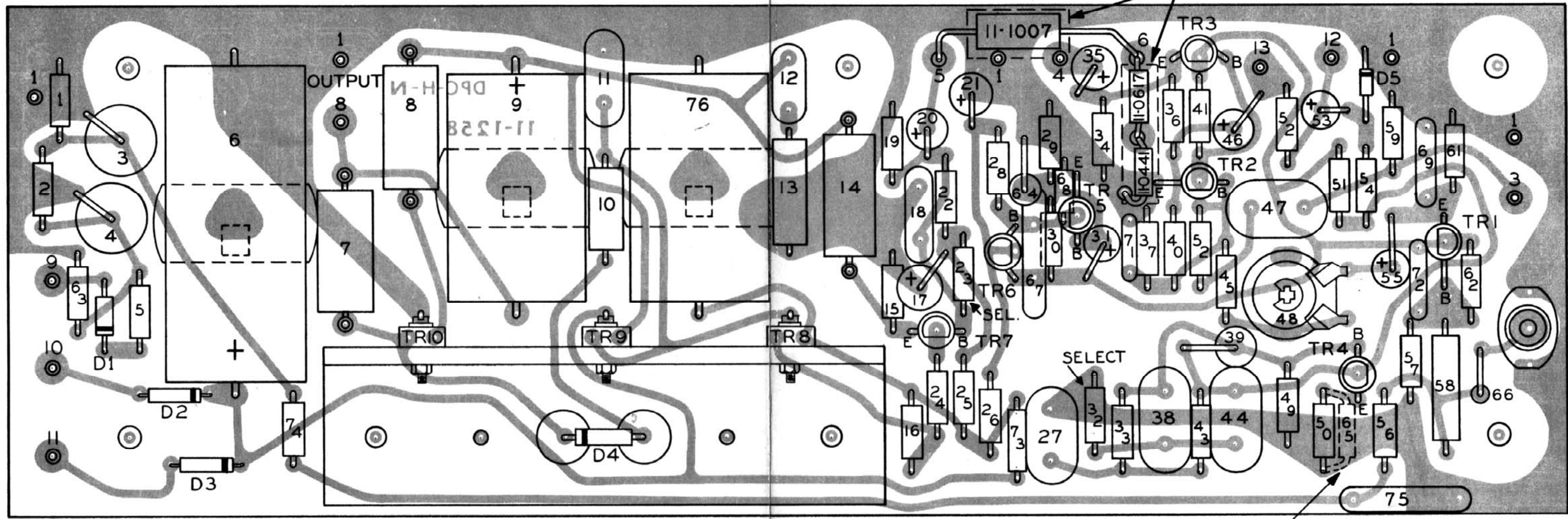
MODEL - 200 - 203 - 203W - 206 - 207 - 214.  
TITLE - SCHEMATIC - AMPLIFIER  
STARTING SERIAL NO. 200-58050 | 203W-56491 | 207-55921 | 203-56403 | 206-57144 | 214-57776

PART NO. II-1305-S-I-E-3  
DATE - JUNE 1, 1971.

[CLICK HERE](#) to buy Wurlitzer transistors from [BustedGear](#)



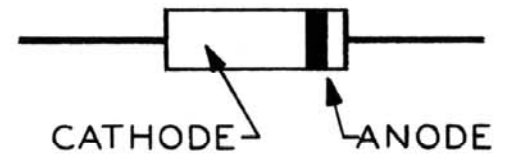
COMPONENTS II-1007, II-0617 & II-0441  
WITHIN DOTTED LINES ARE USED ON  
MODELS 200 AND 203 ONLY.



OPTIONAL

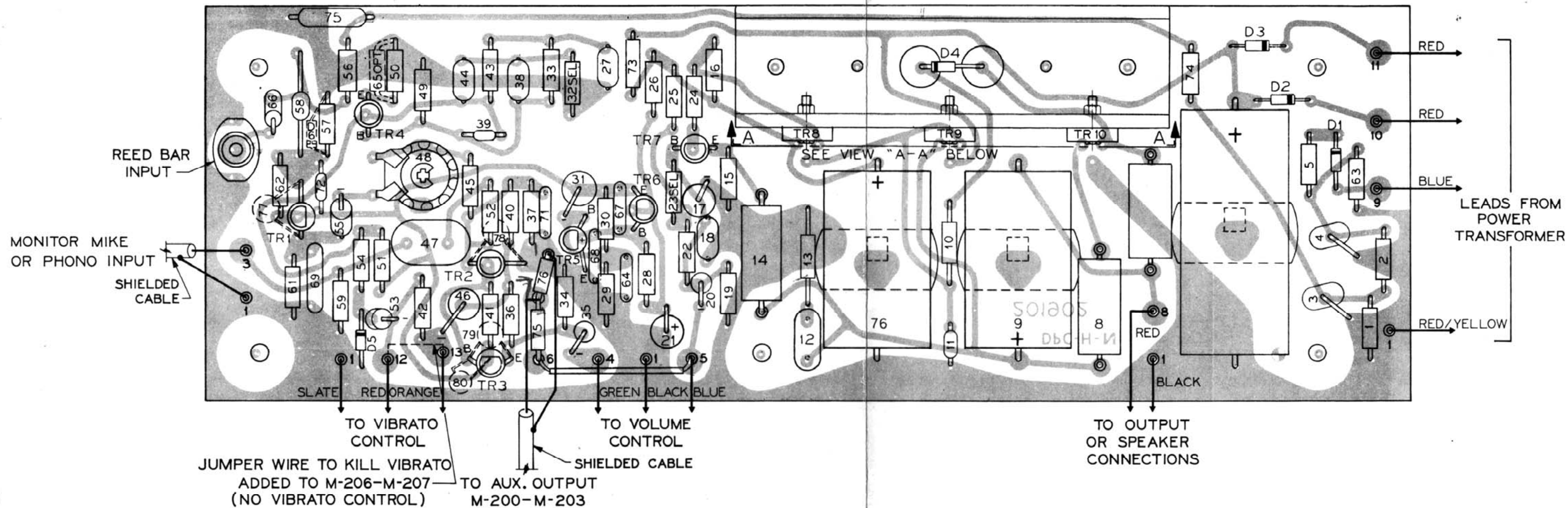
NOTE.  
SEE SCHEMATIC PART NO. II-1305 FOR CONNECTIONS AND COMPLETE CIRCUITS.  
NUMBERS ON COMPONENTS CORRESPOND TO NUMBERS ON SCHEMATIC II-1305.

DIODE

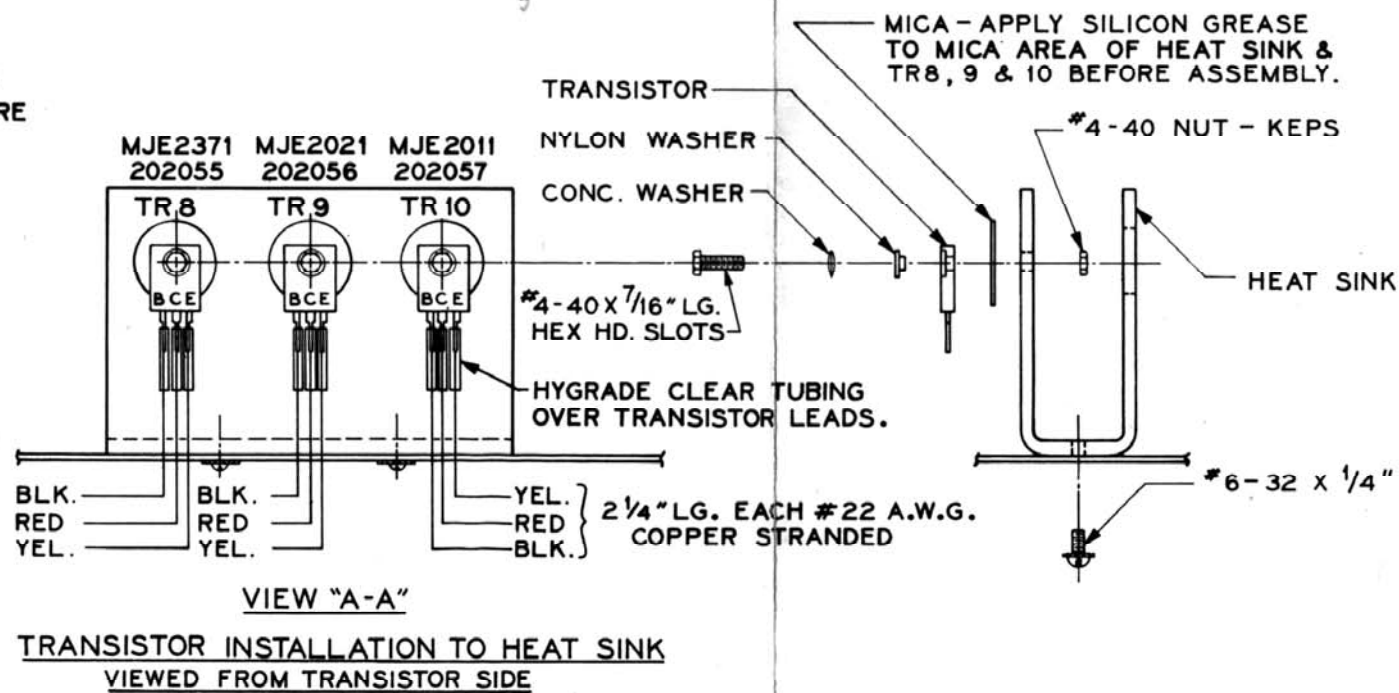
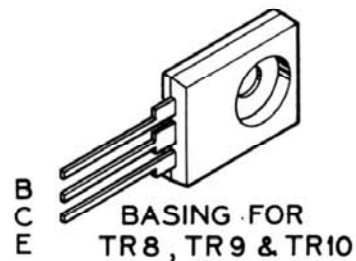


TITLE - P.C. BOARD - E.P. AMPLIFIER.  
MODEL - 200 203 203W PART NO. II-1306-S-I-E-1  
206 207 214  
STARTING SERIAL NO. 58050-56403-56491 DATE JUNE 1, 1971  
57144-55921-57776  
THE WURLITZER COMPANY - DEKALB DIVISION - DEKALB, ILL.





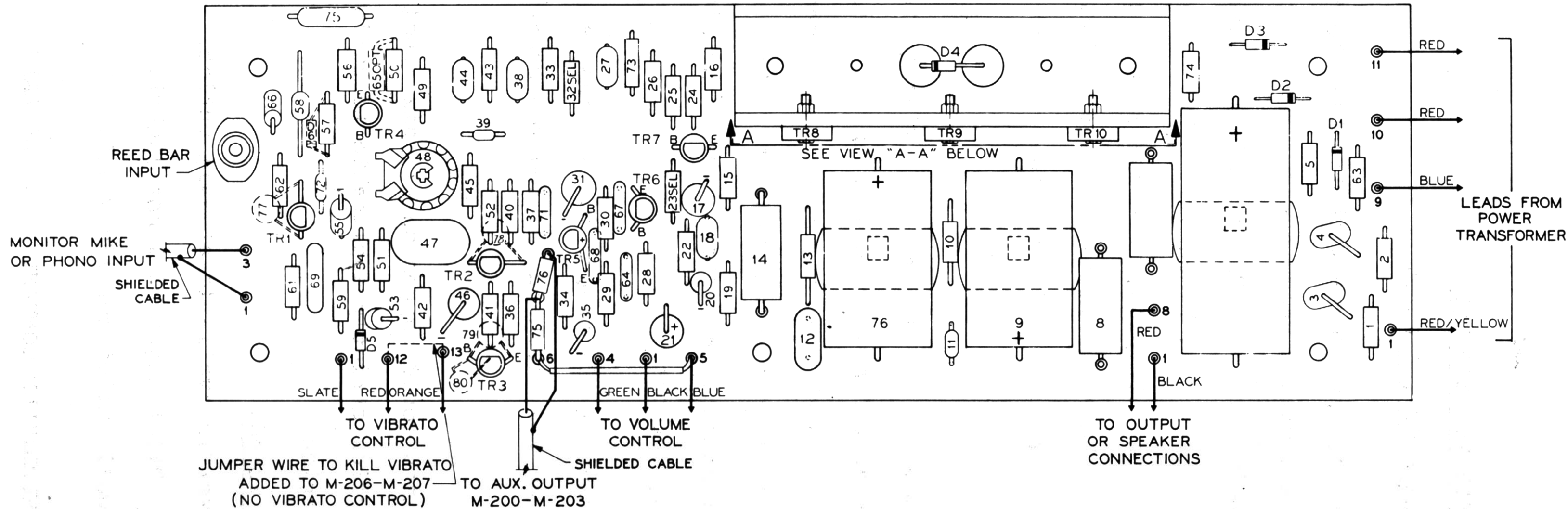
**TORQUE** - USE NO MORE THAN 6 IN. LBS. TO SECURE TR8, TR9 & TR10



**NOTES -**

- SEE SCHEMATIC 201904D FOR CONNECTIONS AND COMPLETE CIRCUITS.
- NUMBERS ON COMPONENTS CORRESPOND TO NUMBERS ON SCHEMATIC 201904D.
- BAND INDICATES CATHODE END OF DIODE.
- PARTS # 75 (6.8K - 1/2 W) & # 76 (2.2K 1/2 W) TO BE ASSEMBLED ON MODELS 200 & 203W FOR LOW LEVEL OUTPUT TO DRIVE EXTERNAL AMPLIFIER FROM AUX. OUTPUT





[CLICK HERE](#) to buy Wurlitzer transistors from BustedGear